


10 μ m


Mag = 1.36 K X

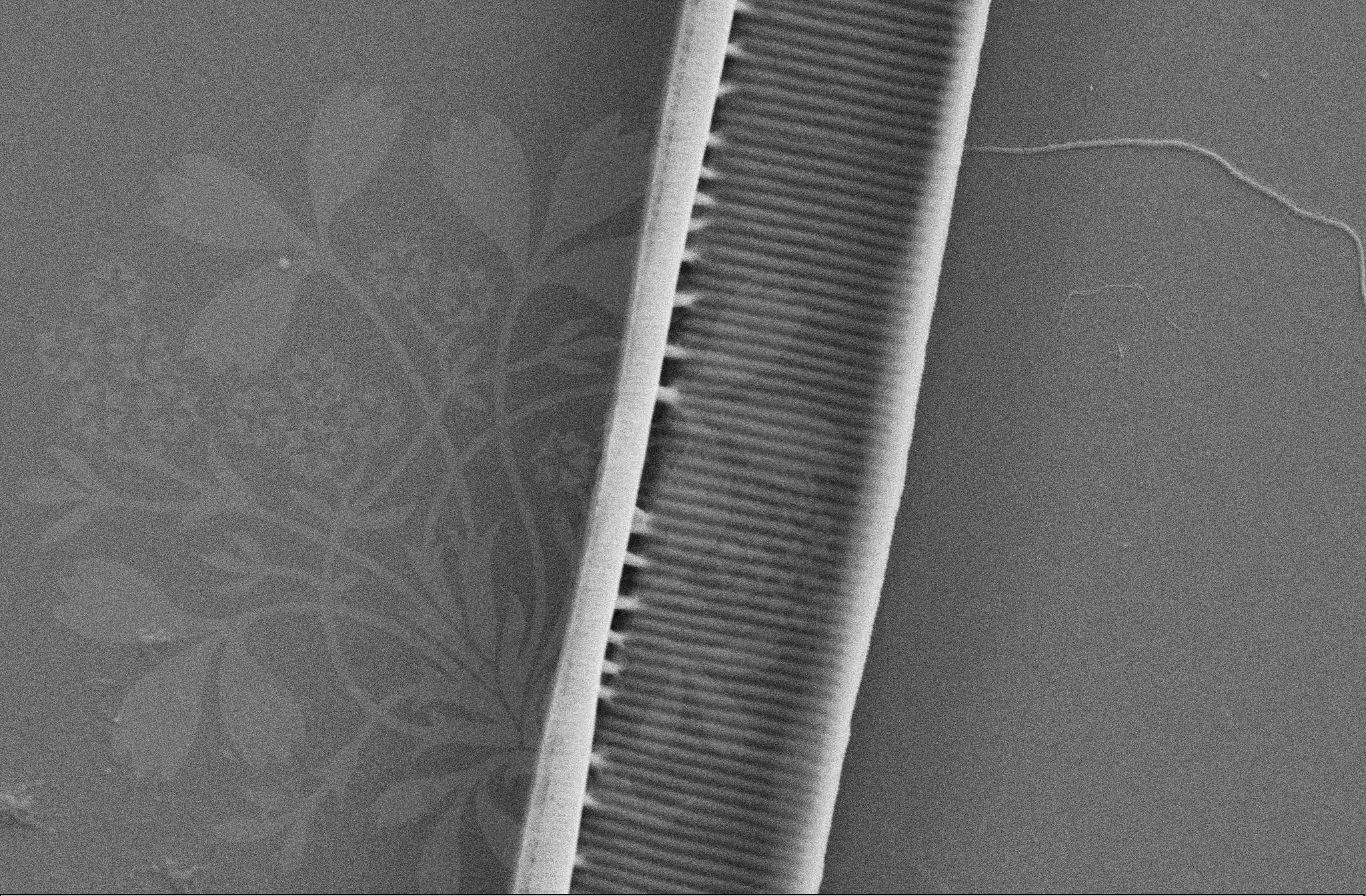
WD = 4 mm

EHT = 5.00 kV Signal A = SE2

File Name = 104-Nit53 N linearis cf v subt.tif

Date :11 Aug 2011





2 μ m
|-----|

Mag = 12.07 K X
WD = 4 mm

EHT = 5.00 kV Signal A = SE2
File Name = 105-Nit53 N linearis cf v subt.tif

Date :11 Aug 2011

